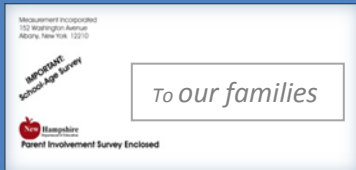




Coming soon! The 2009/2010 Parent Involvement Survey for Parents of Children receiving Special Education services.



From Your School:

Receive

- In March/April 2010
your survey is mailed to you

Fill out

- Complete the survey
it only takes a few minutes

Return

- Return the survey
use the reply envelope provided

This parent involvement survey is for parents of children between the ages of 3 and 21 who receive special education services.

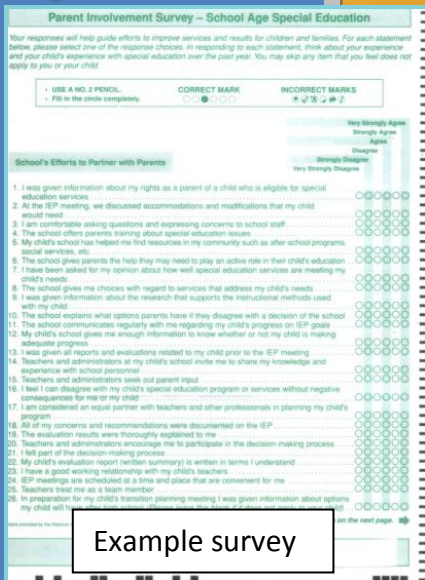
The survey will be mailed to your home soon.

Your responses help to improve special education services for your child and other children across the state.

Please complete it and return it in the postage-paid envelope.

Complete it online with the password located on the cover letter in the envelope.

We truly value your time and participation!



Example survey

For more information, contact NH Connections
Call 800 947 7005/ 603 224 7005
and visit www.nhconnections.org.

NH Connections is funded by the NH Department of Education Bureau of Special Education.